

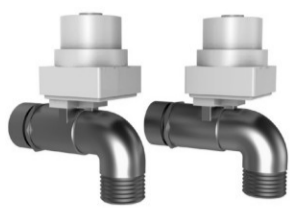
# FloodStop by OnSite PRO™

## Leak Detection & Automatic Water Shut-off System

### Washing Machine Kit - FS3/4H-90

FS3/4H FS3/8CD

## Installation and Operating Manual



© 2012 OnSite PRO Inc.

FloodStop Washing Machine Kit

Congratulations on your purchase of a FloodStop by OnSite PRO™ electronic water leak detection and automatic water shut-off kit for washing machines. This product has been designed to give you years of reliable service and minimize home water damage by detecting water leaks and automatically shutting off the water supply.

To ensure proper installation and to maximize the performance of your FloodStop water leak detection system, please read this manual thoroughly.

#### PLEASE READ CAREFULLY BEFORE PROCEEDING:

If a leak is detected, the FloodStop Valves will shut off the water going to the washing machine. This will stop the continuous flow of water from the water supply valve to the washing machine. However, all or some of the water that is already in the washing machine and hoses may still leak out onto the floor.

**NOTE:** This unit was shipped with an installation and operating manual that contains important information about its operation. If you are installing this unit for use by others, we recommend you leave this manual – or a copy of it – with the user.

#### Washing Machine Kit - Model FS3/4H-90

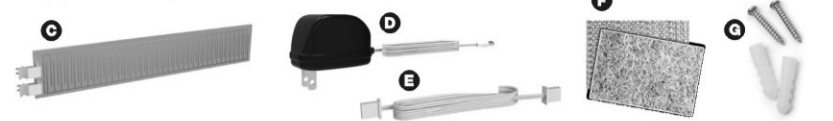
##### FEATURES:

- Control Panel has easy to read, lighted function buttons
- AC Power with battery backup – For continued operation in the event of power outages
- Solid brass, full port motorized ball valves for dependable, long lasting performance
- Valves automatically shut-off the water supply when a leak is detected
- Automatic monthly maintenance cycling of the valves to ensure reliable operation
- Valves can be opened and closed with the touch of a button
- Activates an audible alarm when a leak is detected
- Mute button to silence the audible alarm
- Can be reset and reused continuously with the touch of a button
- Can be tested at any time with the touch of a button
- Can accommodate additional water leak sensors
- 1 Year Limited Warranty

#### FloodStop Washing Machine Kit

##### This Package Contains:

- A (2) FloodStop Motorized Brass Valves (3/4" FHT x 3/4" MHT)
- B (1) Control Panel
- C (1) Leak Sensor with Paper Sleeve
- D (1) AC Adaptor
- E (1) Wire Harness
- F (1) Hook & Loop Mounting Pad
- G (2) Mounting Screws with Anchors



Check to make sure everything in the package matches the Contents Listing above. Read the instructions thoroughly before installing or operating the FloodStop system.

**Warning:** Do not put finger(s) inside FloodStop Valves. Risk of serious injury may occur.  
**Caution:** Do not grip plastic motor drive for leverage when tightening FloodStop Valves.

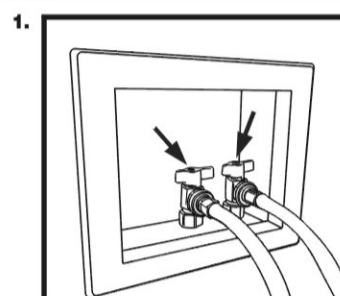
#### Installation

**STOP:** Read the instructions thoroughly before installing or operating the FloodStop System. The FloodStop Valves get installed directly to your existing valves. If you are not sure how to install the FloodStop Valves to your existing water lines, we recommend that you contact a licensed Plumber.

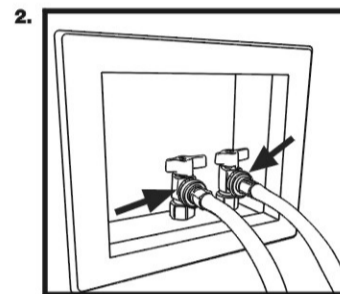
**WARNING:**  
- For use with water only.  
- Do not install on gas line.

#### Installation

1. Shut off the hot and cold valves that supply water to your washing machine.

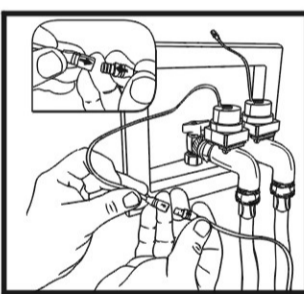


2. Remove the hot and cold washing machine hoses from both valves. Mark the hoses so you know which hose goes to which valve.



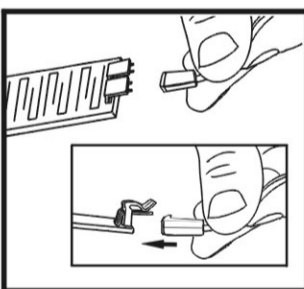
**NOTE:** Do not remove hoses from washing machine.

9. Take the 2 short wires coming from the Control Panel and connect each one to a FloodStop Valve (make sure the arrow on the side of the plugs line up with each other). It does not matter which wire gets connected to which FloodStop Valve.



**NOTE:** The Leak Sensor comes with a Paper Sleeve. If the Leak Sensor is going to make contact with the washing machine, or any other piece of metal, make sure you leave the Paper Sleeve on. If the Leak Sensor makes contact with metal, it will signal the FloodStop Valve to shut off. The Paper Sleeve acts as a barrier between the Leak Sensor and the metal. When the Paper Sleeve becomes wet, it will signal the FloodStop Valve to shut off. If the Leak Sensor will not be contacting metal, you may remove the Paper Sleeve.

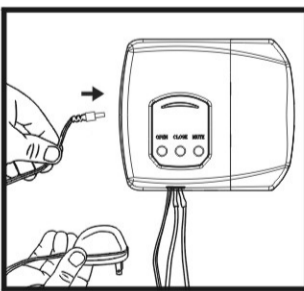
10. Connect plug on end of long flat wire coming from Control Panel to either set of prongs on the Leak Sensor, pushing until plug snaps in place. Then place Leak Sensor on the floor behind the washing machine.



**NOTE:** Additional Leak Sensors can be connected together for added protection. For additional Leak Sensors, purchase FloodStop Water Leak Sensor, Model # XS-01 (available where you purchased your FloodStop System).

**CAUTION:** Do not place Leak Sensor or cord in a walkway, or other location that may cause someone to trip and fall.

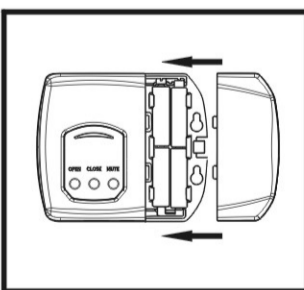
11. Plug the pin on the end of AC Adaptor cord into the bottom of the Control Panel, and then plug the AC Adaptor into a wall outlet. Green indicator lights will start to flash, showing you have power. Note that a red low battery indicator light will also flash about every 30 seconds, and the unit will beep once a minute until the batteries are installed.



**NOTE:** If a nearby wall outlet is not available you will need to purchase a thin low voltage FloodStop™ AC Adaptor Extension Wire™ Model # WAE-09 (available where you purchased your FloodStop System). This wire extends the length of the AC Adaptor cord.

**CAUTION:** Do not plug the AC Adaptor into an extension cord.

12. FloodStop has a battery backup system that allows the unit to continue working in the event that you have a power outage. To set up the backup system, open the front of the Control Panel and install 4 fresh AA alkaline batteries (batteries not included). The low battery indicator light will now stop flashing and the beep will stop.



**CAUTION:** Replace batteries once a year or sooner as necessary. If batteries need to be changed sooner, a red low battery indicator light will flash, and a beep will sound.

#### How to Operate your Control Panel

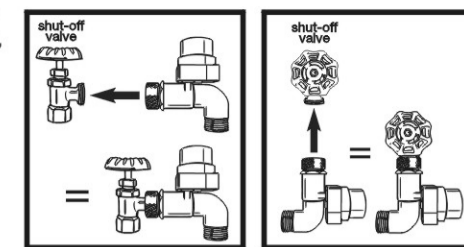
1. Top button opens FloodStop Valve
2. Middle button close FloodStop Valve
3. Bottom button mutes the audible alarm that sounds when a leak is detected



#### Testing Your FloodStop System

1. Push the Open button to make sure FloodStop Valve is open.
  - When the FloodStop Valve is opening or closing, you will hear the valve motor operating for a few seconds.
2. Saturate a rag with water and squeeze over Leak Sensor, or dip the Leak Sensor into a small bucket of water. Once the Leak Sensor is wet, it will signal the FloodStop Valve to close, then an audible alarm will sound and a red light will flash.
  - Push the Mute button to silence the alarm, and note that the red light will continue to flash. This means the FloodStop Valve is closed, and will remain closed until you push the Open button.
  - Before the FloodStop Valve can be opened, the Leak Sensor needs to be dry. There is no need to unplug the unit when drying off the Leak Sensor.
  - The Water test can be done with the paper sleeve still on the Leak Sensor. Note that the paper sleeve is reusable, but once it gets wet you will need to let it air dry flat before placing it back on the Leak Sensor.

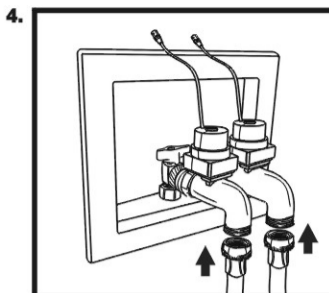
3. Your existing hot and cold manual shut-off valves will have outlets that either face you, or face downward.



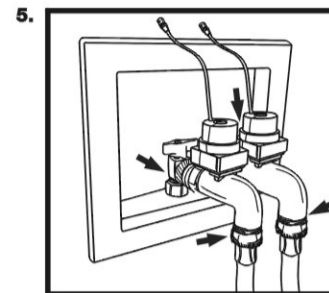
**A. If the outlets face you:** Hand tighten the FloodStop Valves to the manual shut-off valves so their outlets point downward as shown in the diagram. Note that a washer has been pre-assembled in each coupling nut.

**B. If the outlets face downward:** Hand tighten the FloodStop Valves to the manual shut-off valves so their outlets point sideways as shown in the diagram. Note that a washer has been pre-assembled in each coupling nut.

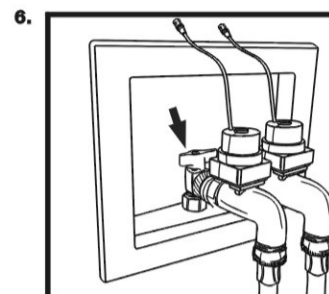
4. Hand tighten the hot and cold washing machine hoses to the correct FloodStop Valve.



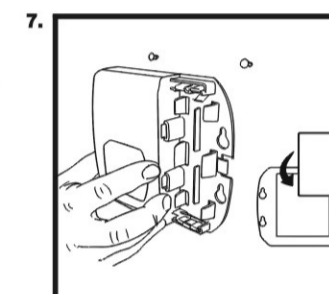
5. Lightly wrench tighten all connections 1/4 turn, or until snug. Do not over tighten.



6. Turn on the hot and cold manual shut-off valves and check for leaks.

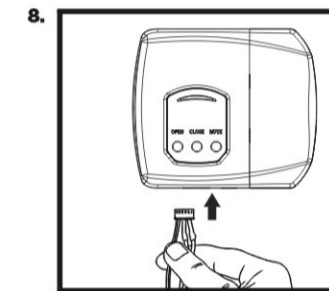


7. Mount the FloodStop Control Panel in an easily accessible location within 30 inches of the FloodStop Valves. You may mount the panel using the screws and anchors, or Hook & Loop Mounting Pad provided. When using the Hook & Loop Mounting Pad, make sure the adhesive is put on a clean, dry surface.



**NOTE:** Depending on the location you pick, and the distance between the hot and cold shut-off valves, you may need to purchase two (2) FloodStop Control Panel to Valve Extension Wires, Model # CEWT-09 (available where you purchased your FloodStop System).

8. With the contacts of the wire harness connector facing you, plug the 6-pin connector end of the Wire Harness into the bottom of the Control Panel.



#### Helpful Hints

- If the Leak Sensor Paper Sleeve is misplaced or becomes unusable, a paper towel can be used in its place.
- The Leak Sensor has two sets of prongs so you can connect additional Leak Sensors. You can link them together so they are positioned at different locations around your laundry area.
- Once a month, the FloodStop Valves will automatically close and open by themselves. The Control Panel is programmed to run this cycle to ensure that the valves continue to function properly in the event that they need to shut off the water.
- Hanging Wires may be tied together using twist ties (Not provided).

#### Troubleshooting

Problem	What to Check
Status light does not light	- Make sure there is power to the outlet. - Unplug AC Adaptor cord from Control Panel and plug back in. - If an AC Adaptor extension wire was used, unplug both ends and reconnect. - Make sure fresh batteries are in the Control Panel.
FloodStop Valves closed but now will not open	- Make sure both sides of Leak Sensor are dry.
The alarm goes off for no apparent reason	- Leak Sensor is touching metal, or the concrete is sweating causing high humidity. Correct the problem by placing the Paper Sleeve on the Leak Sensor, or use a paper towel as a barrier.

#### Troubleshooting

Problem	What to Check
You turn on the washing machine, but no water flows	- Make sure both sides of Leak Sensor are dry, then push the OPEN button to make sure FloodStop Valves are open. - Make sure the hot and cold manual shut-off valves are open.
Leak Sensor becomes wet but FloodStop Valves do not close	- Unplug long flat wire from Leak Sensor and reconnect. - Make sure there is power to the outlet. - Unplug AC Adaptor cord from Control Panel and plug back in. - Unplug 6-pin connector from Control Panel and reconnect. - Locate plug connection between Control Panel and each of the FloodStop Valves. Unplug both connections and reconnect, making sure arrows on side of plugs line up. - If an AC Adaptor extension wire was used, unplug both ends and reconnect. - Make sure fresh batteries are in the Control Panel.

#### Manual Operation of FloodStop Valve

1. Unplug the connection between the Control Panel and the FloodStop Valve.
2. Pull the plastic motor cover off the FloodStop Valve and slide it down the wire until it stops at the plug. Note that no tools are needed to remove the cover.
3. Use a marker and draw a line across the top of the plastic motor housing. This way once the motor is removed you will know how to reposition it for assembly.
4. Remove the 4 screws using a Phillips head screwdriver.
5. Place thumb and finger on plastic gear and rotate clockwise to open valve or counter clockwise to close it. Do not use tools to manually open or close valve.

#### 1 Year Limited Warranty

OnSite PRO Inc. warrants the enclosed FloodStop product to be free from defects in materials or workmanship, under normal use and service, for a period of one (1) years from the date of purchase. If at any time during the warranty period the product is determined to be defective, OnSite PRO Inc. shall repair or replace it (at our option). The warranty is limited to defective parts as stated. All costs of removal and installation of the FloodStop product, including the replacement of warranty parts, are the responsibility of the purchaser. The manufacturer shall not be liable for incidental, consequential, or special damages arising at, or in connection with product use or performance, except as may otherwise be accorded by law. Some states do not allow the exclusion limitation of incidental or consequential damages, so the limitation may not apply to you. Any damage to this FloodStop product as a result of misuse, abuse, neglect, accident, improper installation, or any use violating the instruction manual furnished by us will void this warranty. This warranty does not cover damages or loss caused by defects, and the owner's use of the FloodStop product confirms the understanding that this product does not constitute an insurance policy, and is only a loss mitigation product used to reduce the risk of water damage.

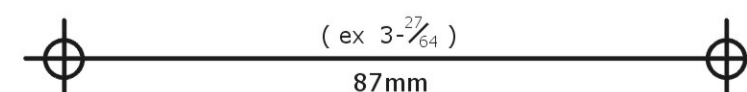
To obtain warranty service, call our Customer Service Department at 1-800-687-4833, or e-mail us at customer.sales@getfloodstop.com. You may also send the product and original dated receipt, prepaid US postage to: OnSite PRO Inc. 28222 Shadowland Circle, Modjeska Canyon, CA 92676, Attention: Customer Service.

#### FloodStop Washing Machine Kit

This equipment has been tested and found to comply with the limits for a Class B digital device, pursuant to part 15 of the FCC Rules. These limits are designed to provide reasonable protection against harmful interference in a residential installation. This equipment generates, uses and can radiate radio frequency energy, and if not installed and used in accordance with the instructions, may cause harmful interference to radio communications. However, there is no guarantee that interference will not occur in a particular installation. If this equipment does cause harmful interference to radio or television reception, which can be determined by turning the equipment off and on, the user is encouraged to try to correct the interference by one or more of the following measures:

- Connect the equipment into an outlet on a circuit different from that to which the receiver is connected.
- Consult the dealer or an experienced radio/TV technician for help.

#### Controller Mounting Template



( ex 3-27/64 )

87mm